

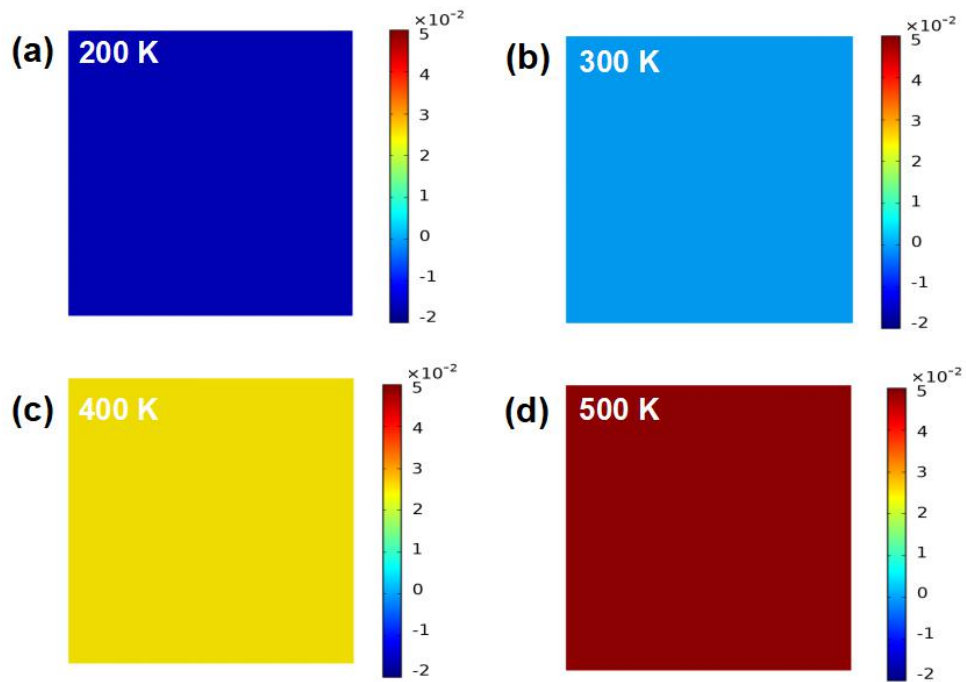
1
2
3
4

Supplementary Figure 2. Using the TEC of monolayer MoS₂ reported in previous literature, numerical simulation results of the strain distribution in bare MoS₂ at 200 K, 300K, 400 K and 500K, respectively.



© The Author(s) 2021. Open Access This article is licensed under a Creative Commons Attribution 4.0 International License (<https://creativecommons.org/licenses/by/4.0/>), which permits unrestricted use, sharing, adaptation, distribution and reproduction in any medium or

format, for any purpose, even commercially, as long as you give appropriate credit to the original author(s) and the source, provide a link to the Creative Commons license, and indicate if changes were made.



5
6
7
8

Supplementary Figure 4. Adopting the TEC of monolayer MoS₂ obtained in this work, numerical simulation results of the strain distribution in bare MoS₂ at 200 K, 300K, 400 K and 500K, respectively.